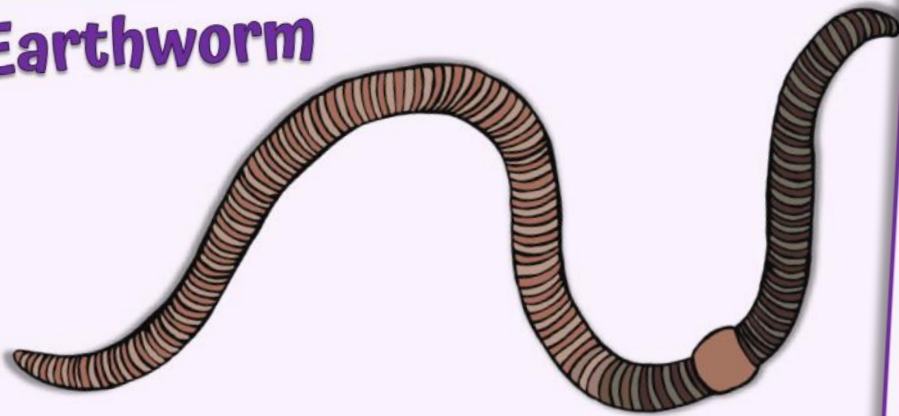


# Woodland Wildlife

## Fact Cards - Minibeasts (A4)

These fact cards can be used as part of a display or as a stimulus for discussion, writing and drawing before or after time spent in a woodland setting.

### Earthworm



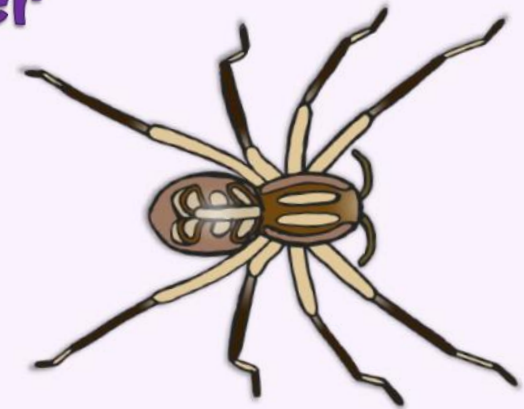
**Length:**  
Up to 35cm

**Food:**  
Nutrients in soil.

**Fact:** Worms help to make soil ready for plants to grow successfully.

© 2021 Little Owls Resources

### Garden Spider



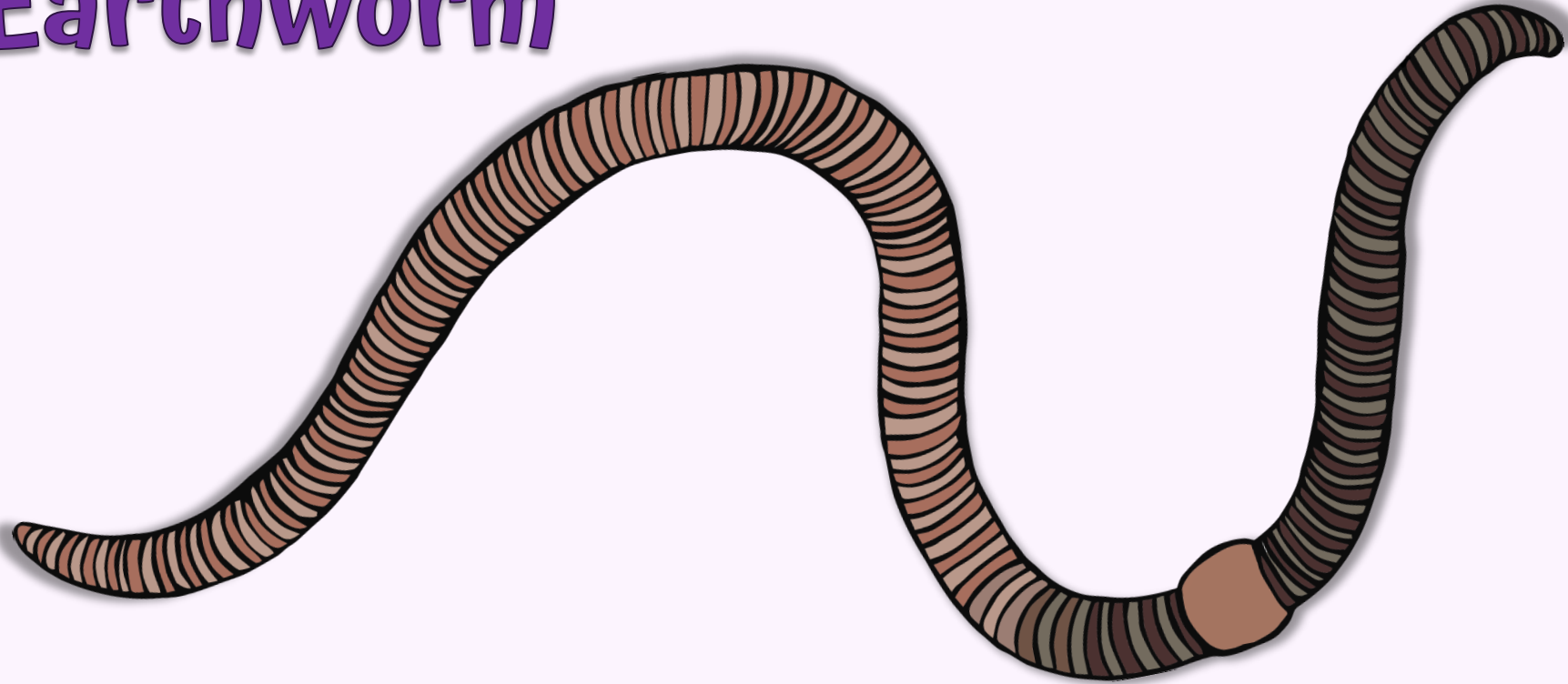
**Length:**  
Up to 1.5cm

**Food:**  
Flying insects.

**Fact:** The main predator of garden spiders are birds.

© 2021 Little Owls Resources

# Earthworm



**Length:**

Up to 35cm

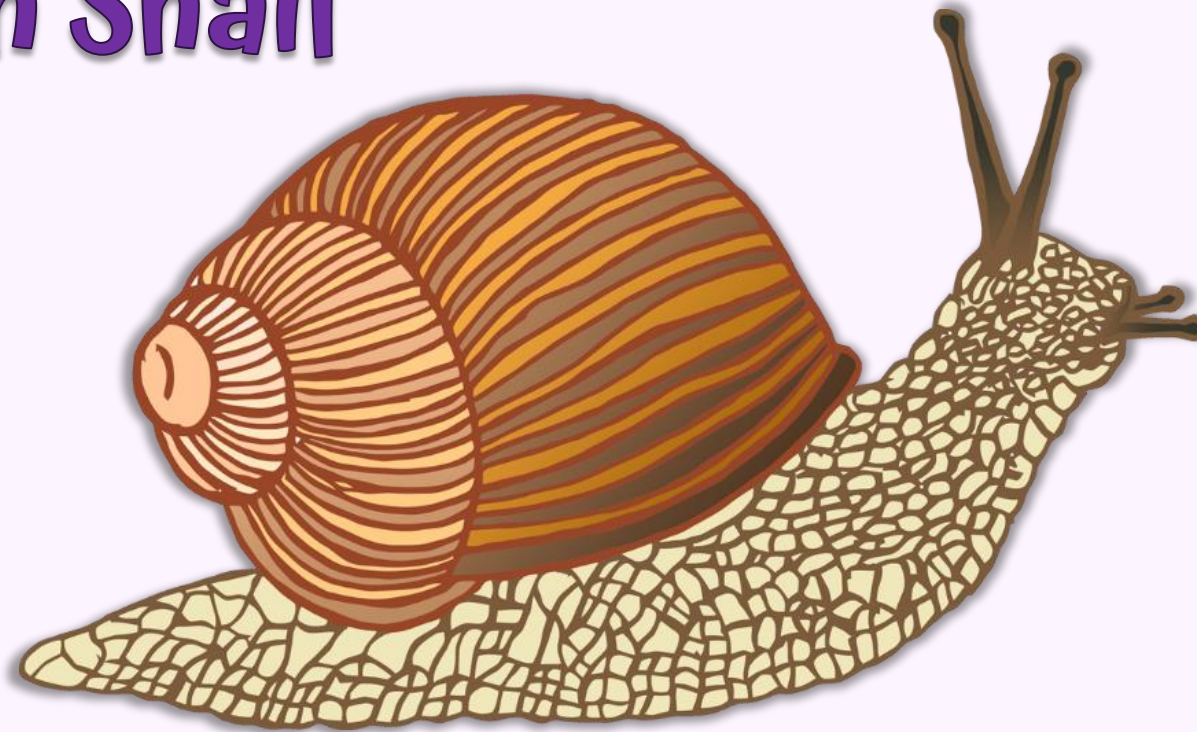
**Food:**

Nutrients in soil.

**Fact:**

Worms help to make soil ready for plants to grow successfully.

# Garden Snail



**Length:**

Up to 3–4cm

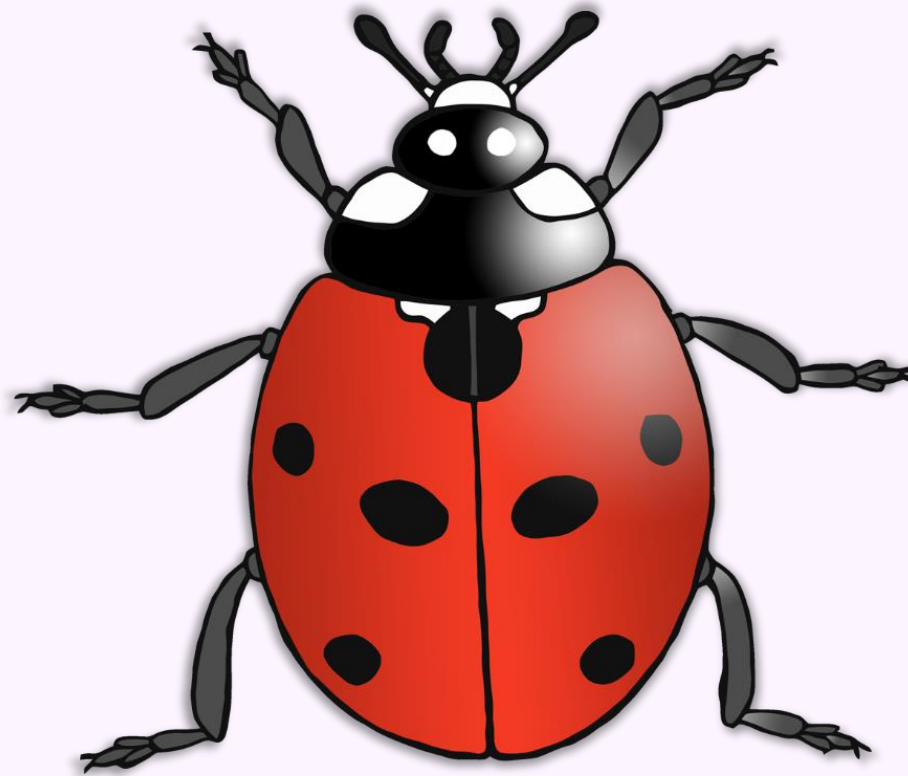
**Food:**

Seedlings, small plants.

**Fact:**

Snails can carry ten times their  
body weight.

# Ladybird

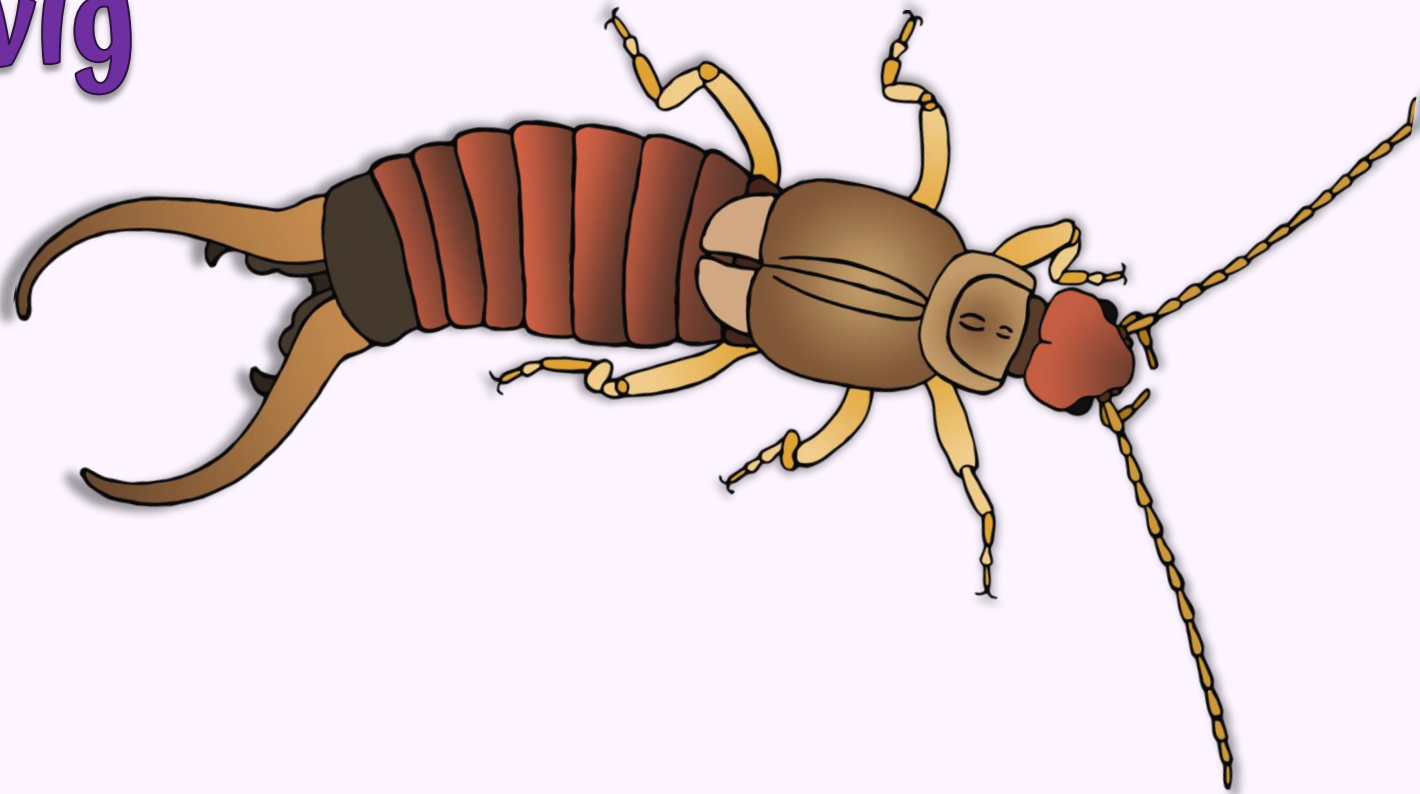


**Length:**  
Up to 1cm

**Food:** Aphids and other  
small insects.

**Fact:** Ladybirds pretend to be dead when  
they are threatened.

# Earwig

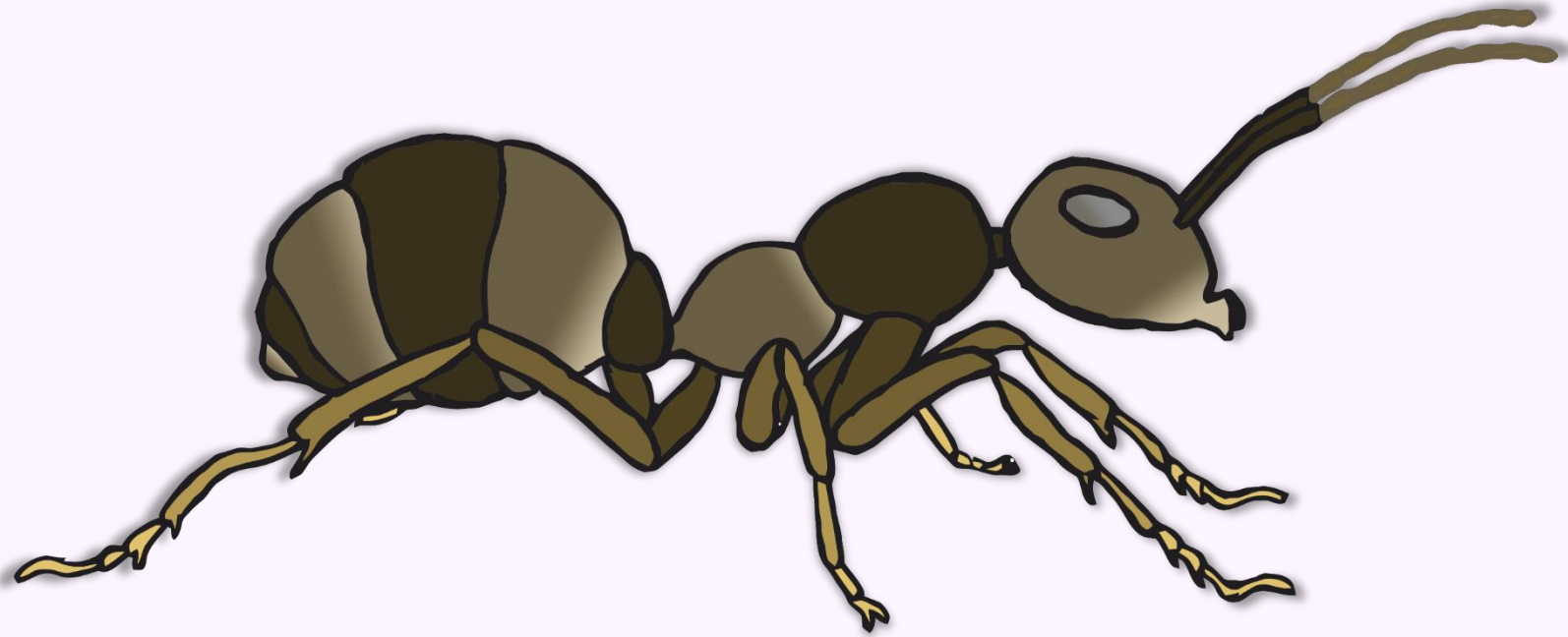


**Length:**  
Up to 1.5cm

**Food:** Small plants, flowers,  
and insects.

**Fact:** Earwigs have wings but  
hardly ever fly.

# Ant



**Length:**

Up to 0.5cm

**Food:**

Almost anything!

**Fact:**

Ants can carry FIFTY times their own  
body weight!

# Bumblebee

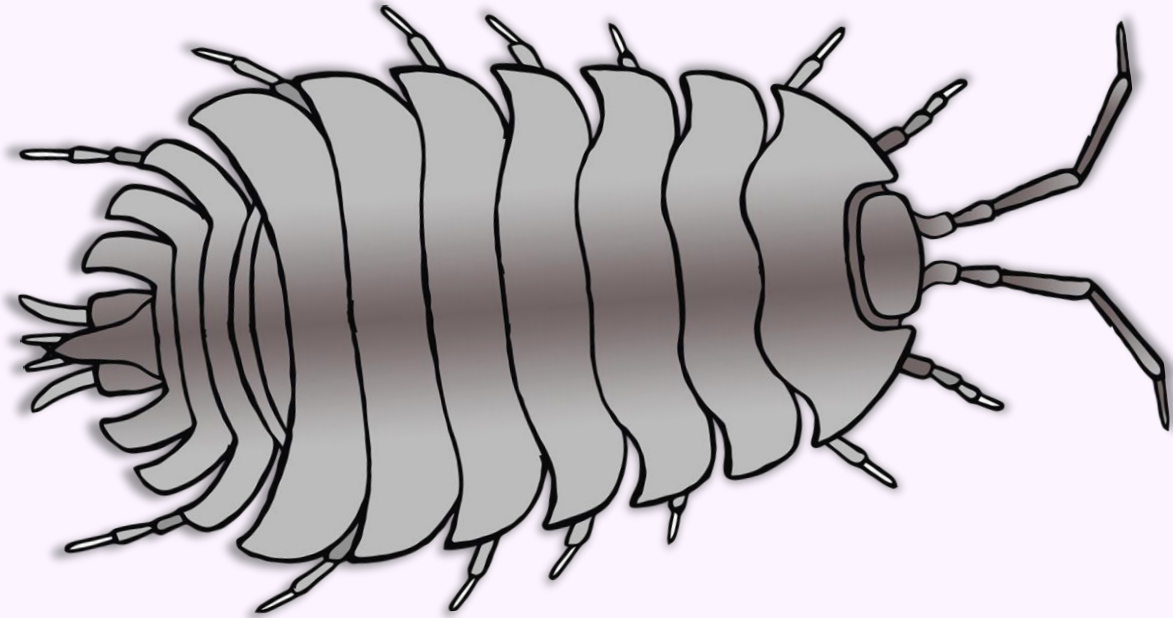


**Length:**  
Up to 2cm

**Food:** Nectar and pollen  
from flowers.

**Fact:** Very important in helping to spread  
pollen from flower to flower.

# Woodlouse



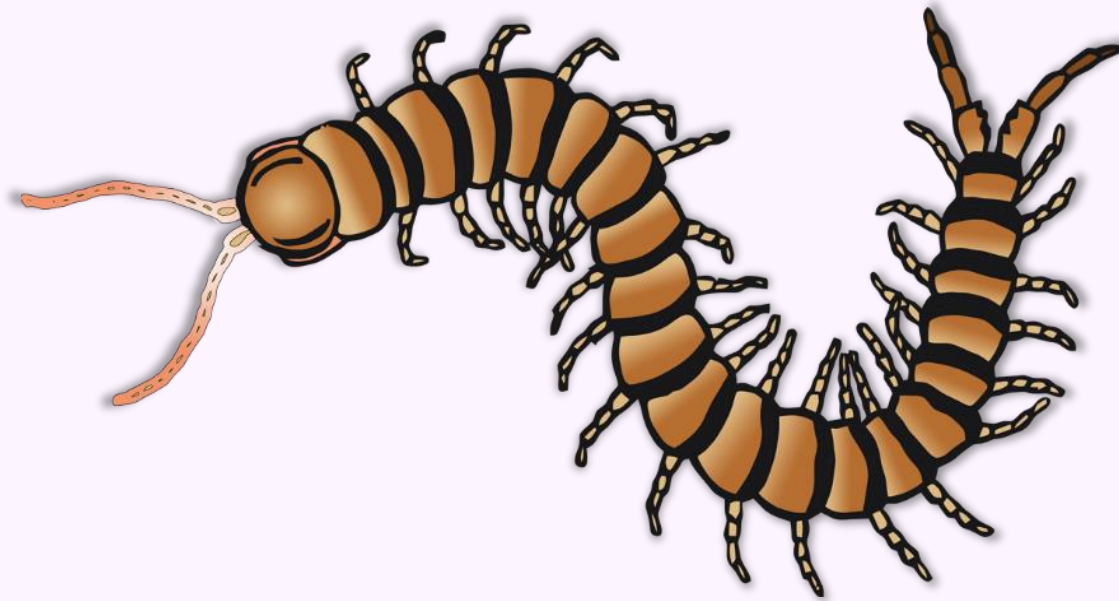
**Length:**  
Up to 1.5cm

**Food:** Old wood, leaves, fruit,  
and dead insects.

**Fact:**  
Related to shrimps and crabs.



# Centipede

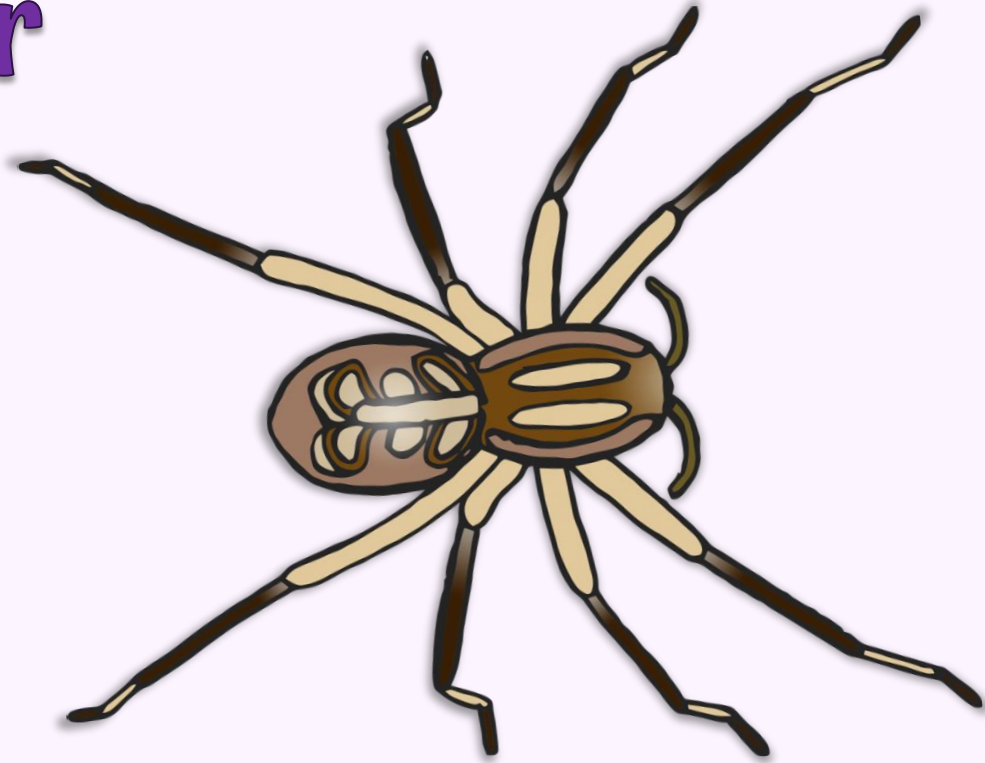


**Length:**  
Up to 3cm

**Food:** Small insects,  
worms, and slugs.

**Fact:** Centipedes hunt for food  
at night.

# Garden Spider



**Length:**

Up to 1.5cm

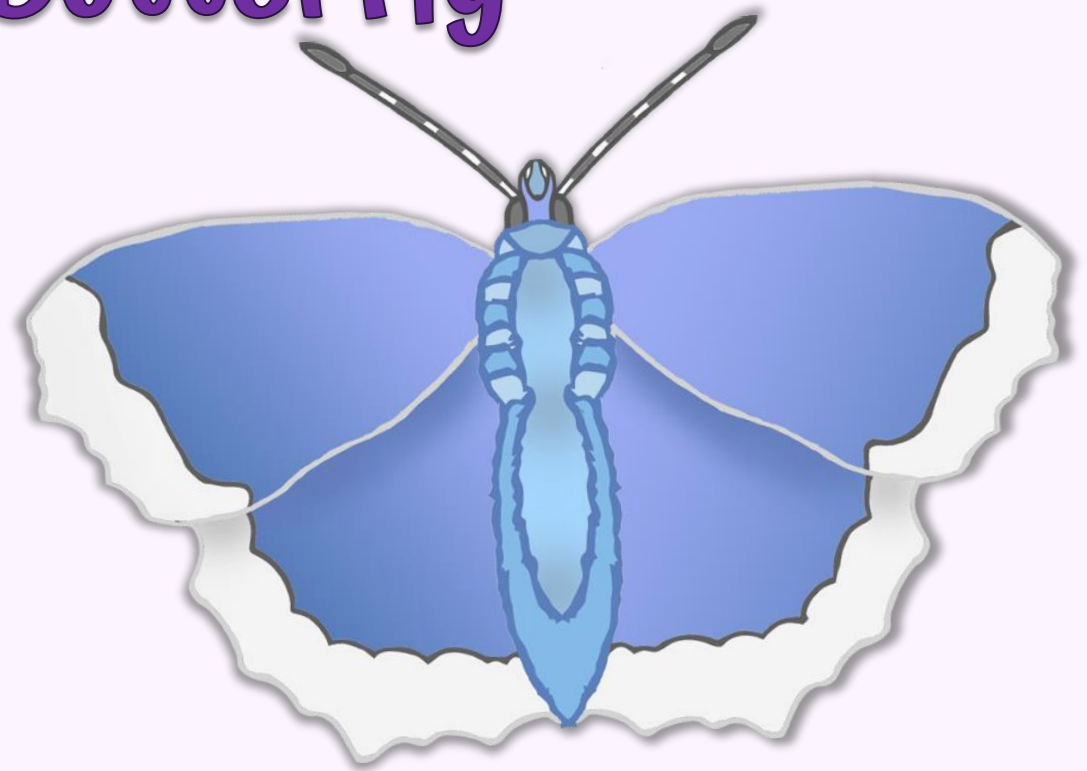
**Food:**

Flying insects.

**Fact:**

The main predator of garden spiders are birds.

# Common Blue Butterfly



**Size:**  
Up to 3.5cm wide.

**Food:**  
Nectar flowers.

**Fact:** Most likely to see them from May  
until October.