

Woodland Wildlife

Fact Cards - Plants (A4)

These fact cards can be used as part of a display or as a stimulus for discussion, writing and drawing before or after time spent in a woodland setting.

Daffodil

Height:
42cm

Flowering Season:
Spring

Fact:
Brought to UK by the
Romans.



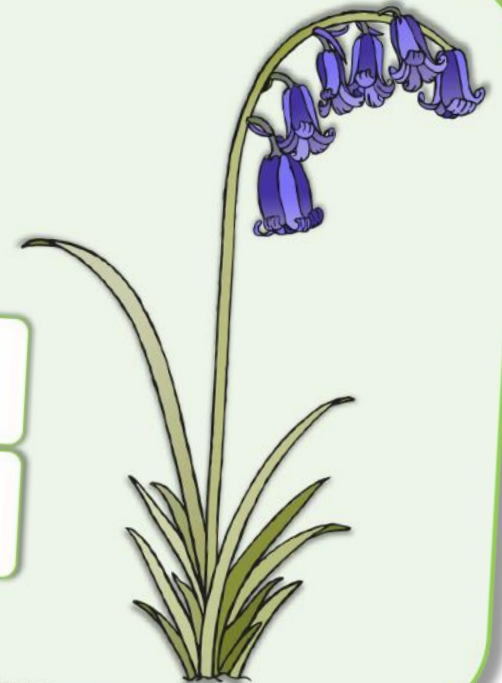
© 2021 Little Owls Resources

Bluebell

Height:
30cm

Flowering Season:
Spring

Fact:
Bluebells are an indication of
an area of ancient woodland.



© 2021 Little Owls Resources

Ivy



Height:

Up to 30m (on tree)

Flowering Season:

Autumn

Fact:

Ivy uses trees and walls to grow up high to get more sunlight.

Bluebell

Height:

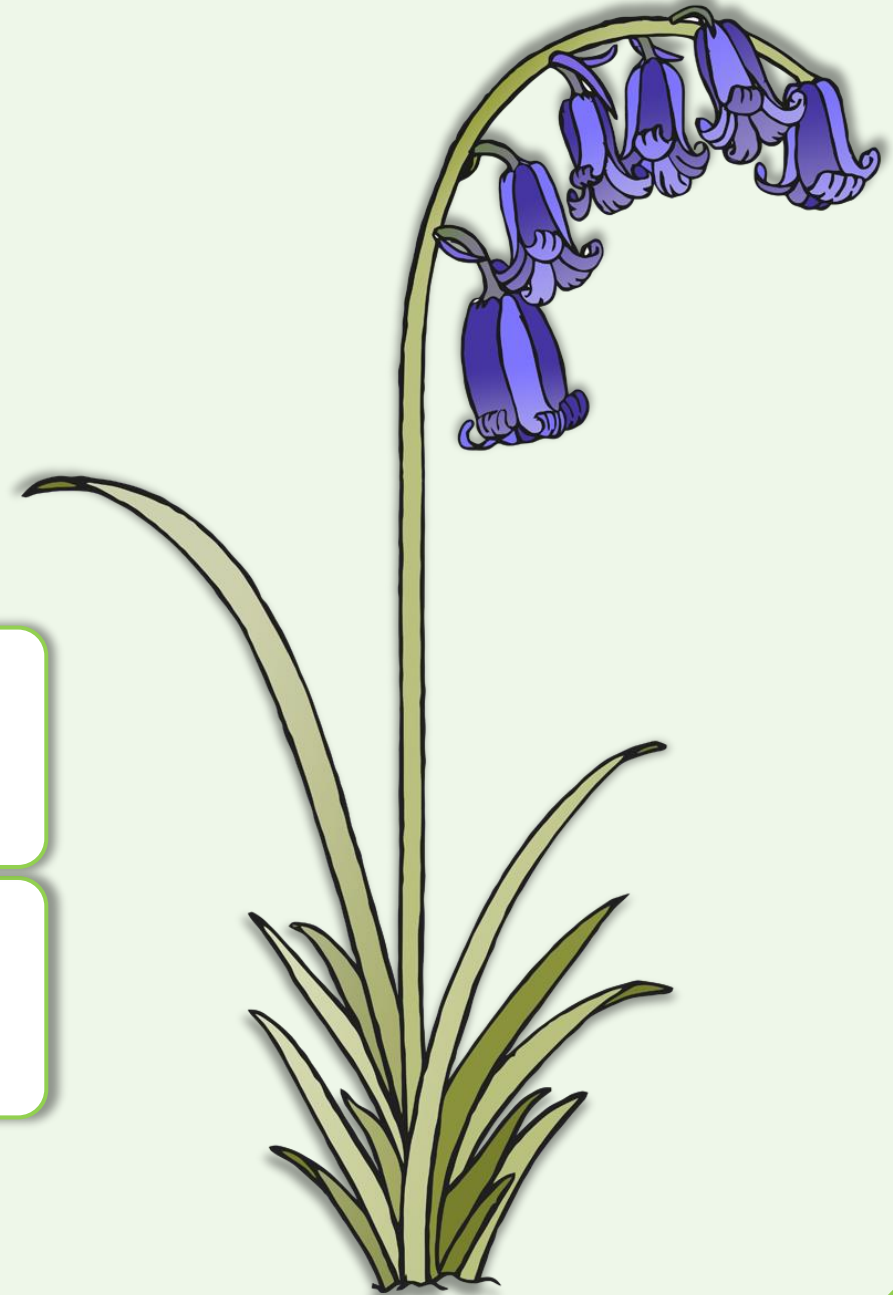
30cm

Flowering Season:

Spring

Fact:

Bluebells are an indication of an area of ancient woodland.



Bramble

Height:

2m

Flowering Season:

Summer

Fact: Blackberries grow on bramble. People have traditionally picked blackberries for thousands of years.



Snowdrop

Height:

15cm

Flowering Season:

Winter >>> Spring

Fact:

Used to treat headaches in the past.



Daffodil



Height:

42cm

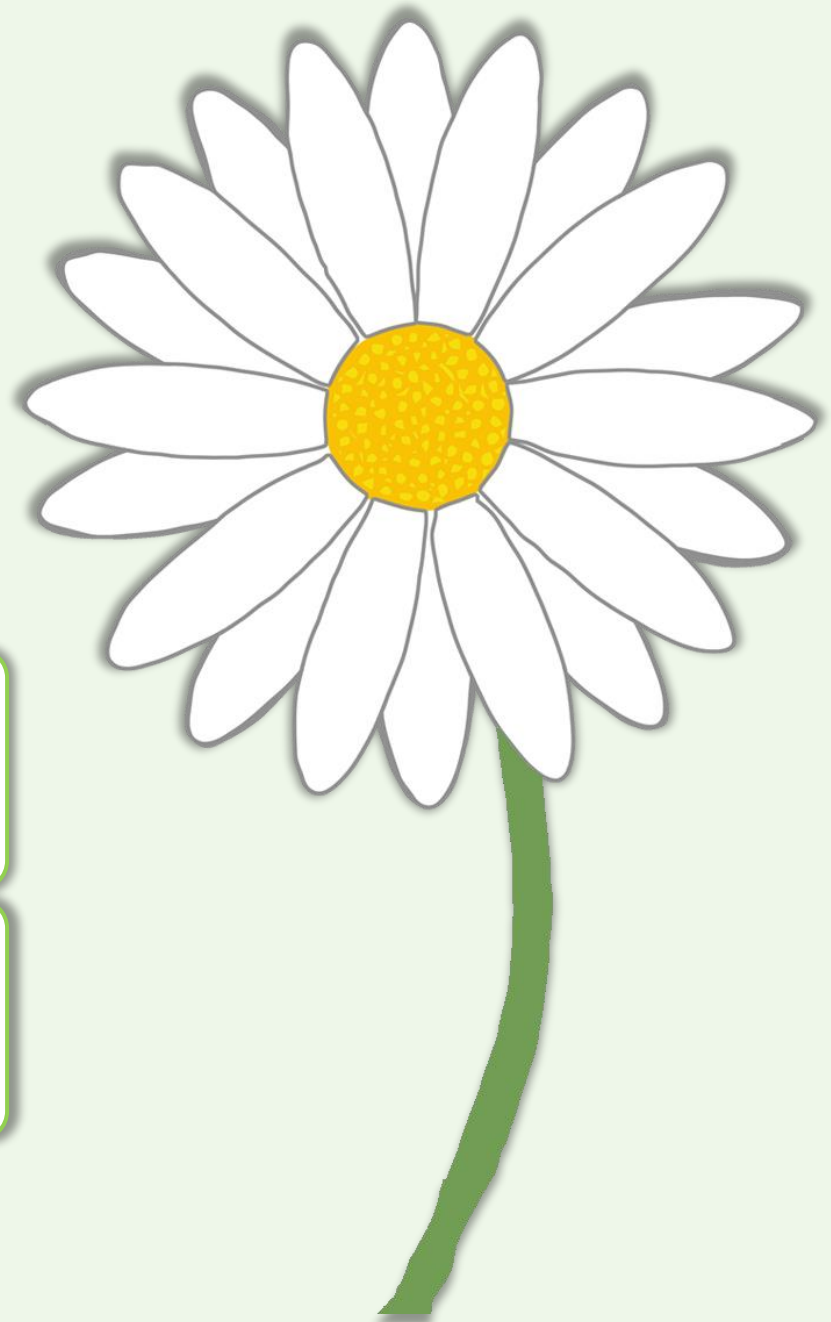
Flowering Season:

Spring

Fact:

**Brought to UK by the
Romans.**

Daisy



Height:

Up to 60cm

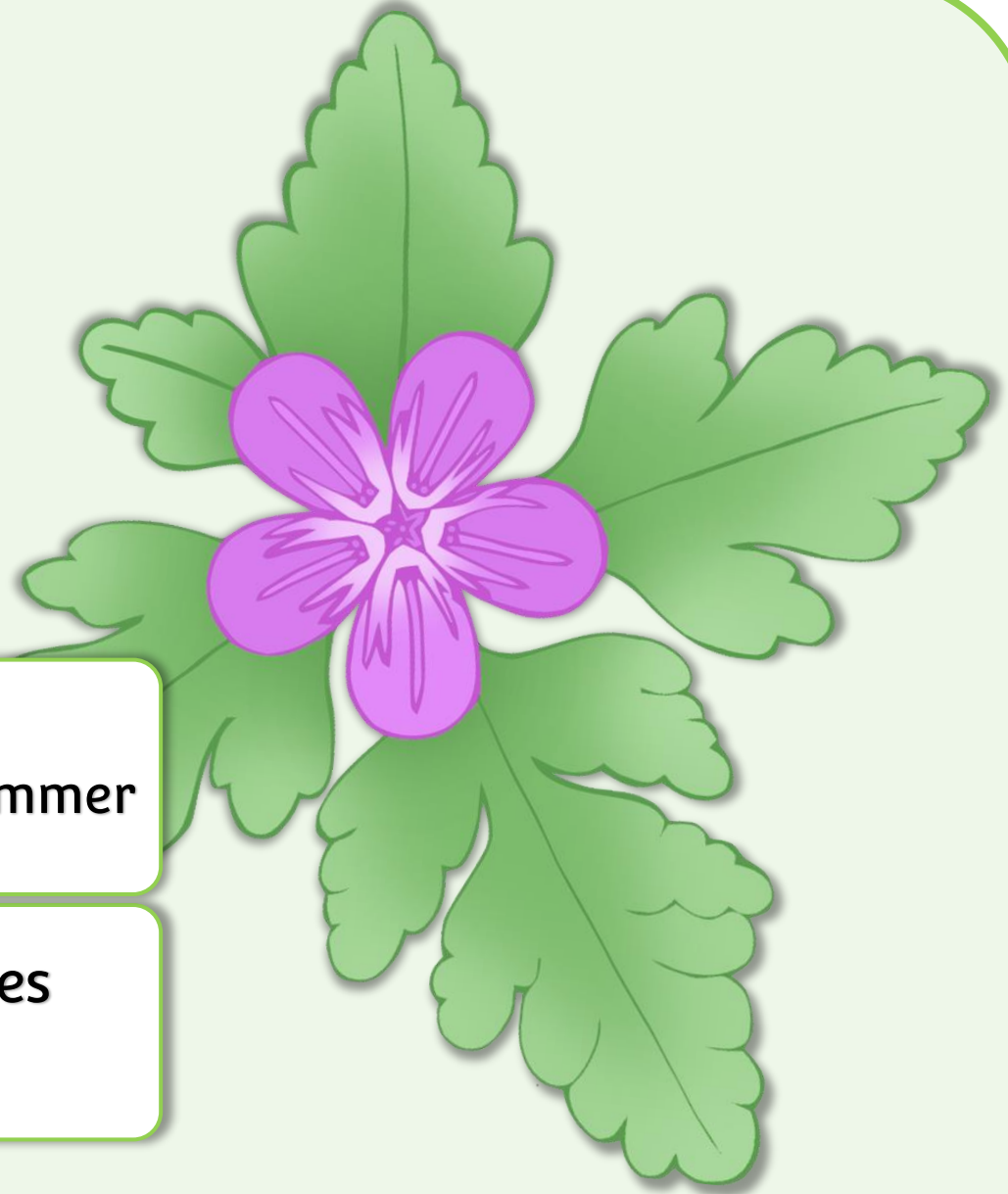
Flowering Season:

Spring >>> Autumn

Fact:

**Used to treat coughs and
asthma in the past.**

Herb Robert



Height:

30cm

Flowering Season:

Late Spring >>> Summer

Fact:

**Used to treat stomach aches
in the past.**

Wood Anemone

Height:

5–15cm

Flowering Season:

Spring

Fact:

Wood Anemone are an indication of an area of ancient woodland.

